



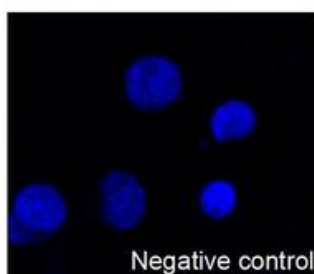
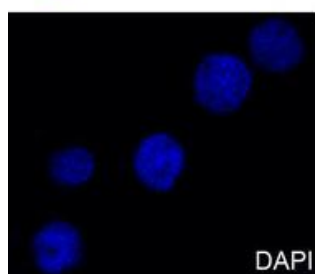
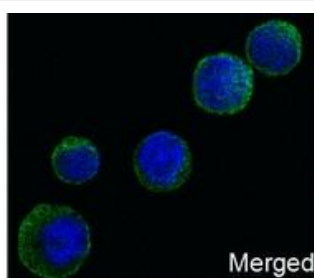
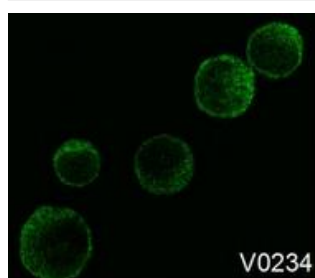
## CD3(ABT295)mouse mAb

货号	YP-Ab-18085
同位型	IgG
应用	IHC;WB;IF;ELISA
种属	Human
靶点	CD3E
简介	>>Hematopoietic cell lineage;>>Th1 and Th2 cell differentiation;>>Th17 cell differentiation;>>T cell receptor signaling pathway;>>Chagas disease;>>Measles;>>Human T-cell leukemia virus 1 infection;>>Epstein-Barr virus infection;>>Human immunodeficiency virus 1 infection;>>PD-L1 expression and PD-1 checkpoint pathway in cancer;>>Primary immunodeficiency
基因名称	CD3E T3E
蛋白名称	CD3, CD3E
免疫原	Synthesized peptide derived from human CD3, CD3E AA range: 1-100
特异性	The antibody can specifically recognize human CD3e protein, and shows no reaction with CD3d or CD3g. In western blotting of Jurkat cell lysate, the antibody can label a 23 kDa band corresponding to CD
组成	PBS, 50% glycerol, 0.05% Proclin 300, 0.05%BSA
来源	Mouse, Monoclonal/IgG2a, kappa
稀释	IHC 1:200-1000. WB 1:500-2000. IF 1:100-500. ELISA 1:1000-5000
纯化工艺	Protein G
其他名称	4930549J05Rik; A430104F18Rik; AW552088; Cd247; CD247 antigen; CD247 antigen, zeta subunit; CD247 molecule; CD3; CD3 antigen, delta subunit; CD3 delta; CD3 epsilon; CD3 eta; CD3 gamma; CD3 molecule delta polypeptide; CD3 molecule, epsilon polypeptide; CD3 molecule, gamma polypeptide; CD3 zeta ; CD3-DELTA; CD3d; CD3D antigen delta polypeptide; CD3d antigen, delta polypeptide (TiT3 complex); CD3d molecule delta; CD3d molecule delta CD3 TCR complex; CD3d molecule, delta (CD3-TCR complex); CD3D_HUMAN; CD3E ; CD3e antigen; CD3E antigen epsilon polypeptide; CD3e antigen, epsilon polypeptide (TiT3 complex); CD3e molecule epsilon; CD3e molecule epsilon CD3 TCR complex; CD3e molecule, epsilon (CD3-TCR complex); CD3epsilon; CD3G ; CD3g antigen; CD3G antigen gamma polypeptide; CD3g antigen, gamma polypeptide (TiT3 complex); CD3g molecule gamma; CD3g molecule gamma CD3 TCR complex; CD3g molecule, gamma (CD3-TCR complex); CD3H; CD3Q ; CD3Z; CD3zeta; Ctg3; FLJ17620; FLJ17664; FLJ18683; FLJ79544; FLJ94613 ; IMD19; Leu-4; MGC138597; OKT3, delta chain; OTTHUMP0
分子量	23kD
实测条带	23kD

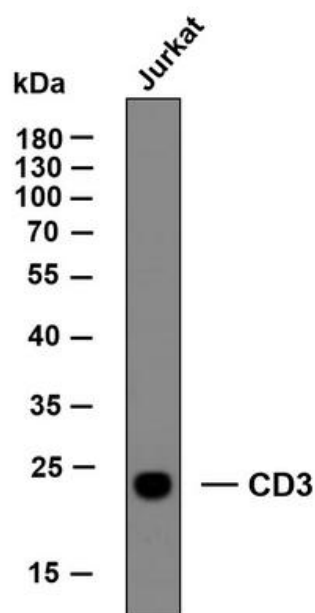


背景	CD3 protein contains $\epsilon$ 、 $\gamma$ 、 $\delta$ and $\zeta$ four subunits, including extracellular, transmembrane and intracellular domains. CD3 is a T cell marker, which is not expressed by B cells. CD3 complex mediates TCR antigen recognition, leading to T cell proliferation and cytokine release. It is mainly used for the diagnosis of T-cell lymphoma, with high specificity but low sensitivity. In order to improve the accuracy of diagnosis, it is usually combined with CD45RO in clinical application.
功能	function:The CD3 complex mediates signal transduction.,online information:CD3E mutation db,similarity:Contains 1 Ig-like (immunoglobulin-like) domain.,similarity:Contains 1 ITAM domain.,subunit:The TCR/CD3 complex of T-lymphocytes consists of either a TCR alpha/beta or TCR gamma/delta heterodimer coexpressed at the cell surface with the invariant subunits of CD3 labeled gamma, delta, epsilon, zeta, and eta.,
细胞定位	Membranous
组织表达	Membranous
浓度	1 mg/ml
储存	-15°C to -25°C/1 year(Do not lower than -25°C)
有关注意事项	Avoid repeated freezing and thawing!
使用建议	This product can be used in immunological reaction related experiments. For more information, please consult technical personnel.

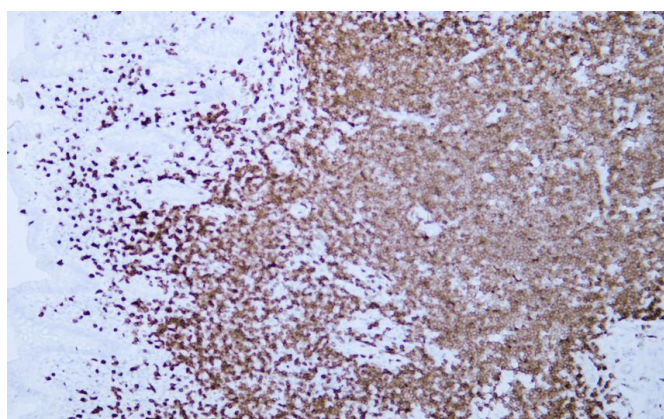
## Products Images



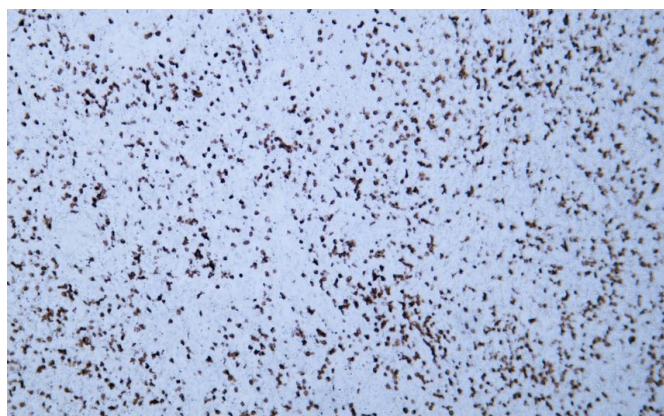
Confocal immunofluorescent analysis of Jurkat cells labeling CD3 (ABT295) mouse mAb followed by Goat Anti-mouse IgG H&L (FITC Conjugate) secondary antibody (green). Counterstained with DAPI (blue). Negative control: PBS was used instead of primary antibody, followed by Goat Anti-mouse IgG H&L (FITC Conjugate) secondary antibody (green).



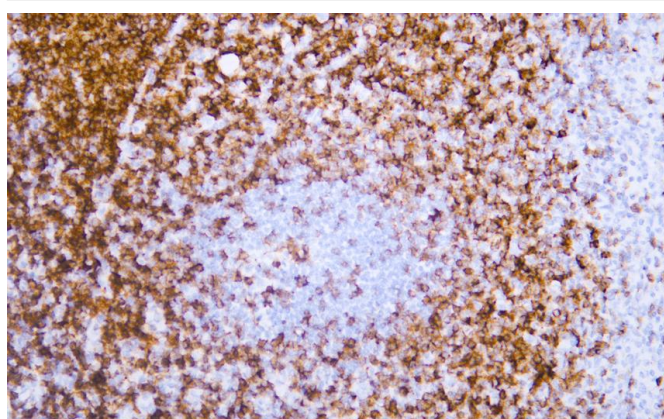
Whole cell lysates of Jurkat were separated by 12% SDS-PAGE, and the membrane was blotted with anti-CD3 antibody. The HRP-conjugated anti-Mouse IgG antibody was used to detect the antibody.



Human appendix tissue was stained with Anti-CD3 (ABT295) Antibody



Human spleen tissue was stained with Anti-CD3 (ABT295) Antibody



Human tonsil tissue was stained with Anti-CD3 (ABT295) Antibody